



Public Health
England

**Draft – Findings removed
pending peer review**

Increasing uptake of NHS Health Checks
– The effectiveness of automated prompts from GP IT systems to staff at increasing the uptake of the NHS Health Check

NHS Health Check National Conference 2016

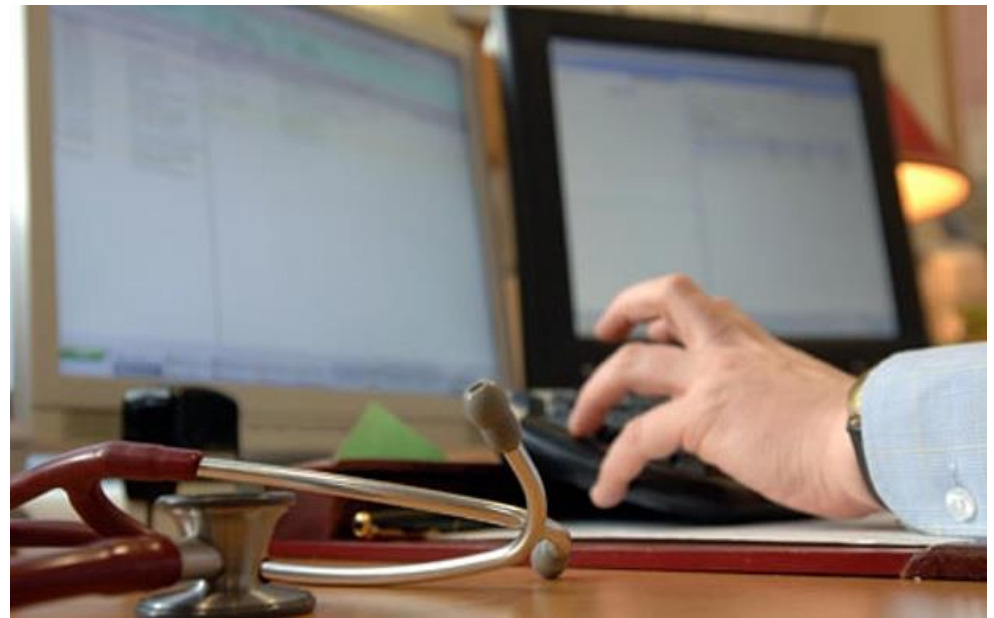
Karen Tan – PHE Behavioural Insights Researcher



Purpose

Assess the effectiveness of automated prompts from GP IT systems to staff as a means of increasing uptake of NHS Health Checks.

The prompts were designed to encourage staff to offer eligible patients an appointment for an NHS Health Check during the staff-patient interaction.





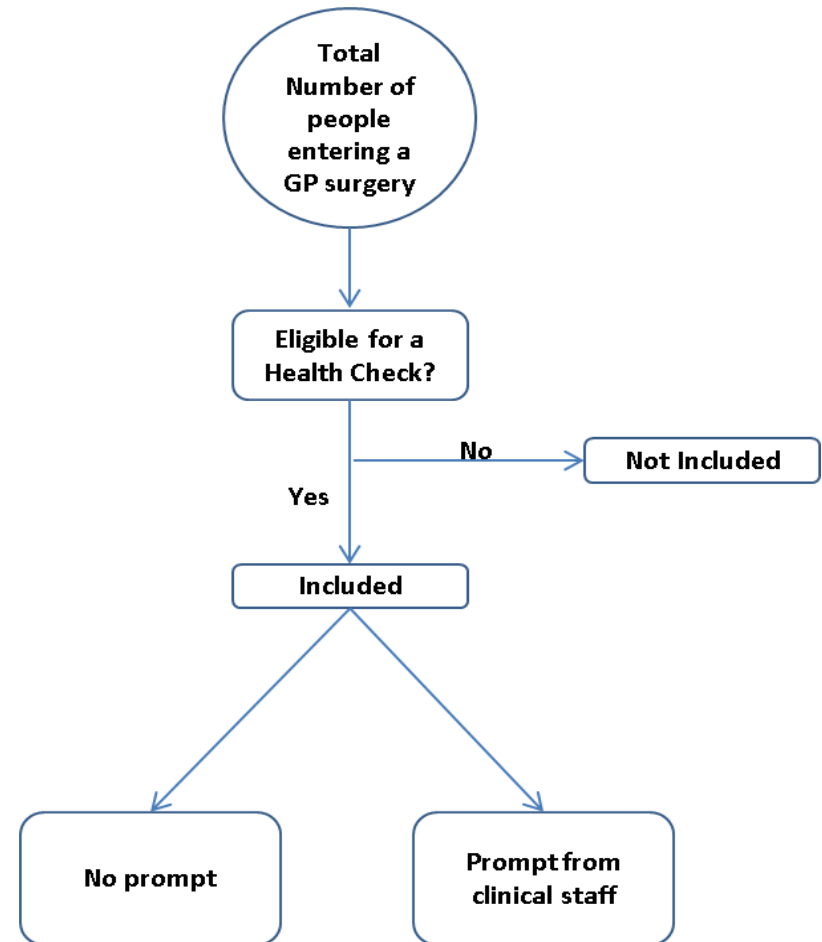
Study Design

Pseudo Randomised control trial:

- Randomised at patient level
- Based on age and location of practice

Prompt Triggers:

- Add a Consultation
- Book Appointment
- Load Patient Record
- Register a Patient
- Save Consultation
- Update Patient Record

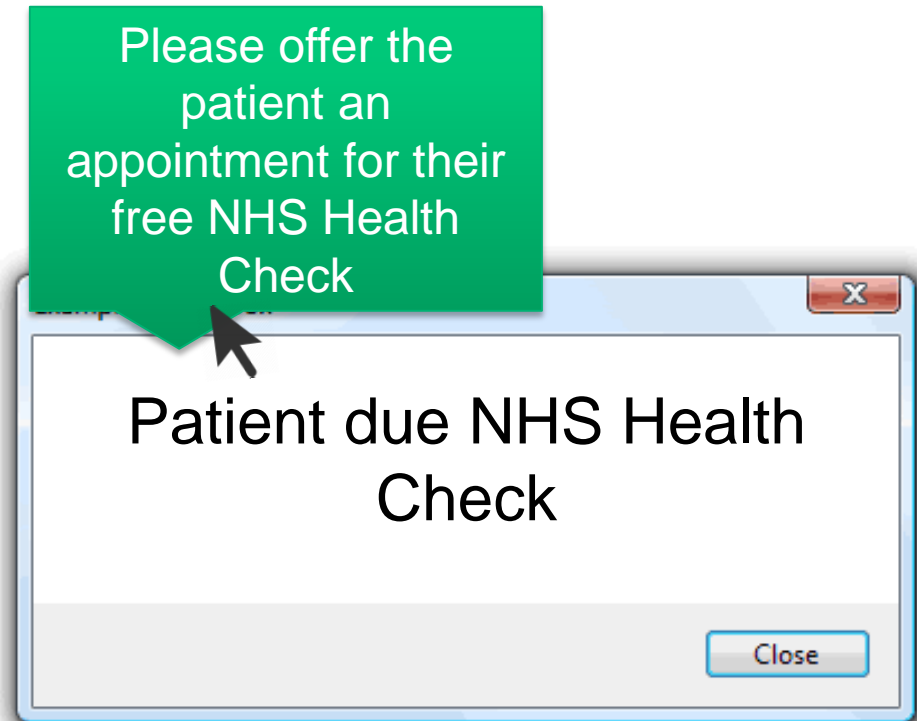




Behavioural Insights

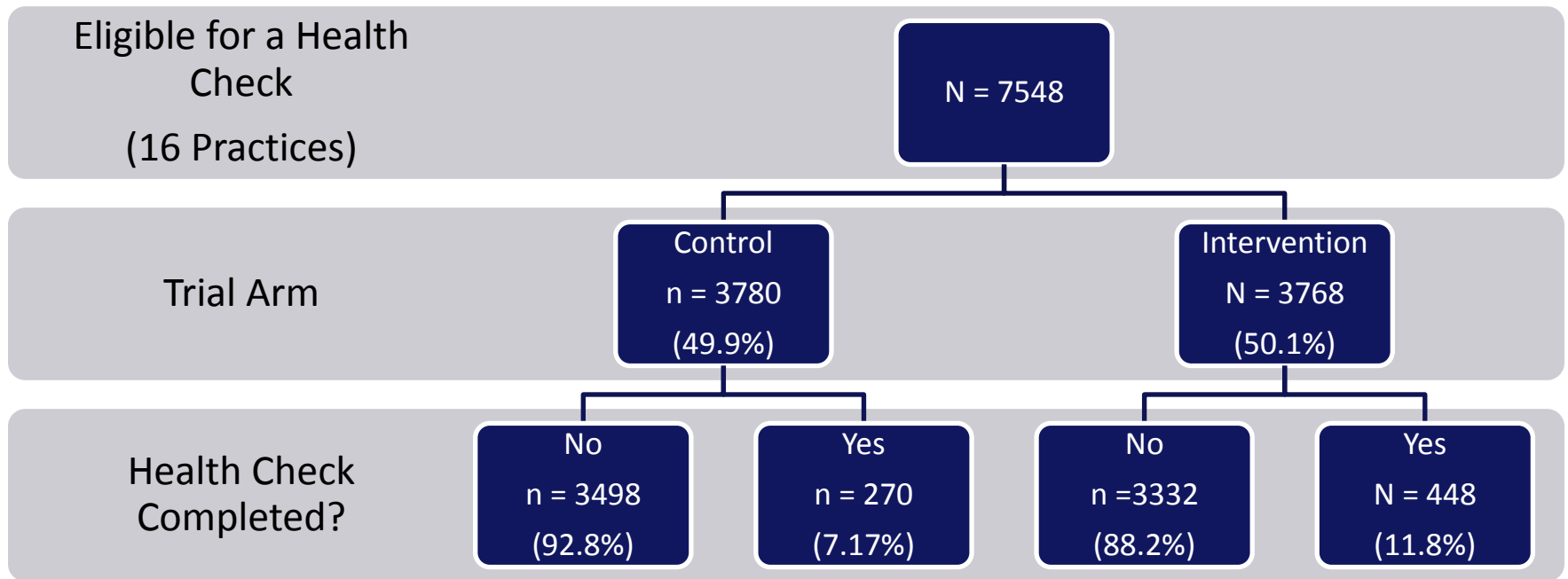
Applied:

- 1) Salience – *visual reminder to offer the NHS HC*
- 2) Urgency – *‘Due’*
- 3) Timeliness – *Reminder during staff/patient interaction*





Randomisation



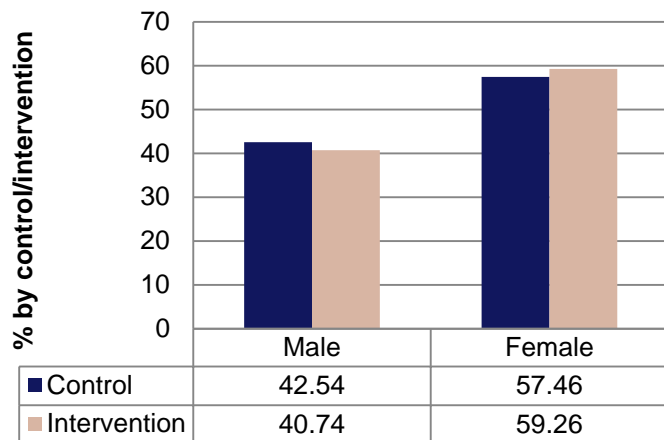


Public Health
England

Results – Analysis Removed

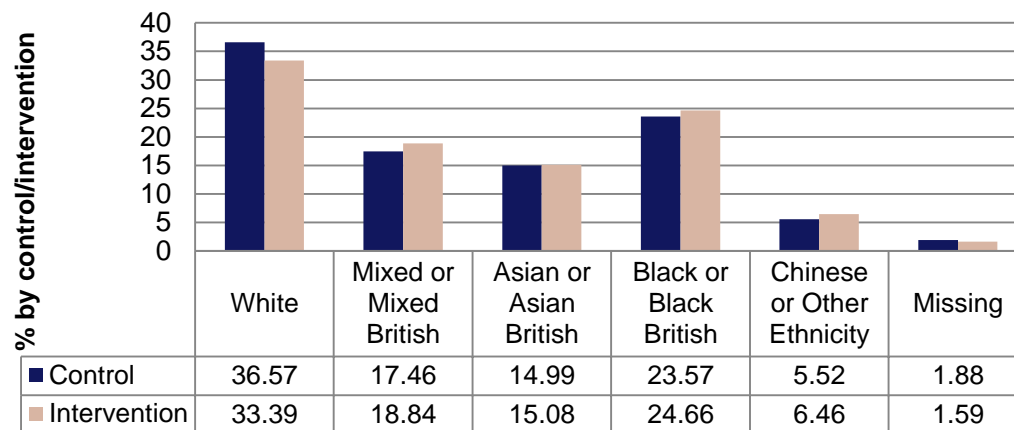


Sex, $\chi^2 = 0.52^*$

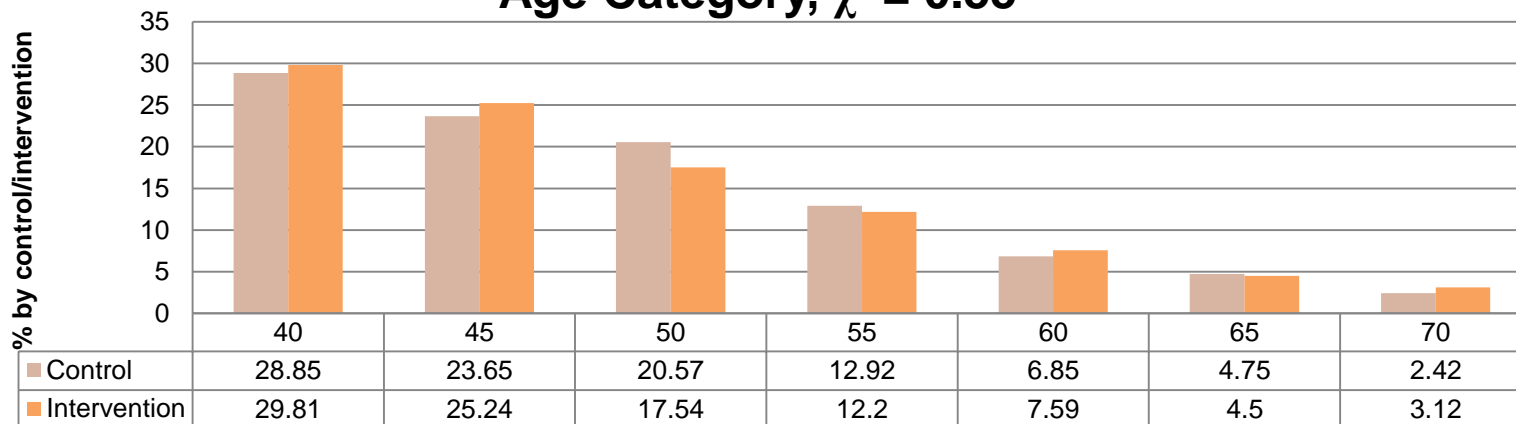


Descriptive Statistics

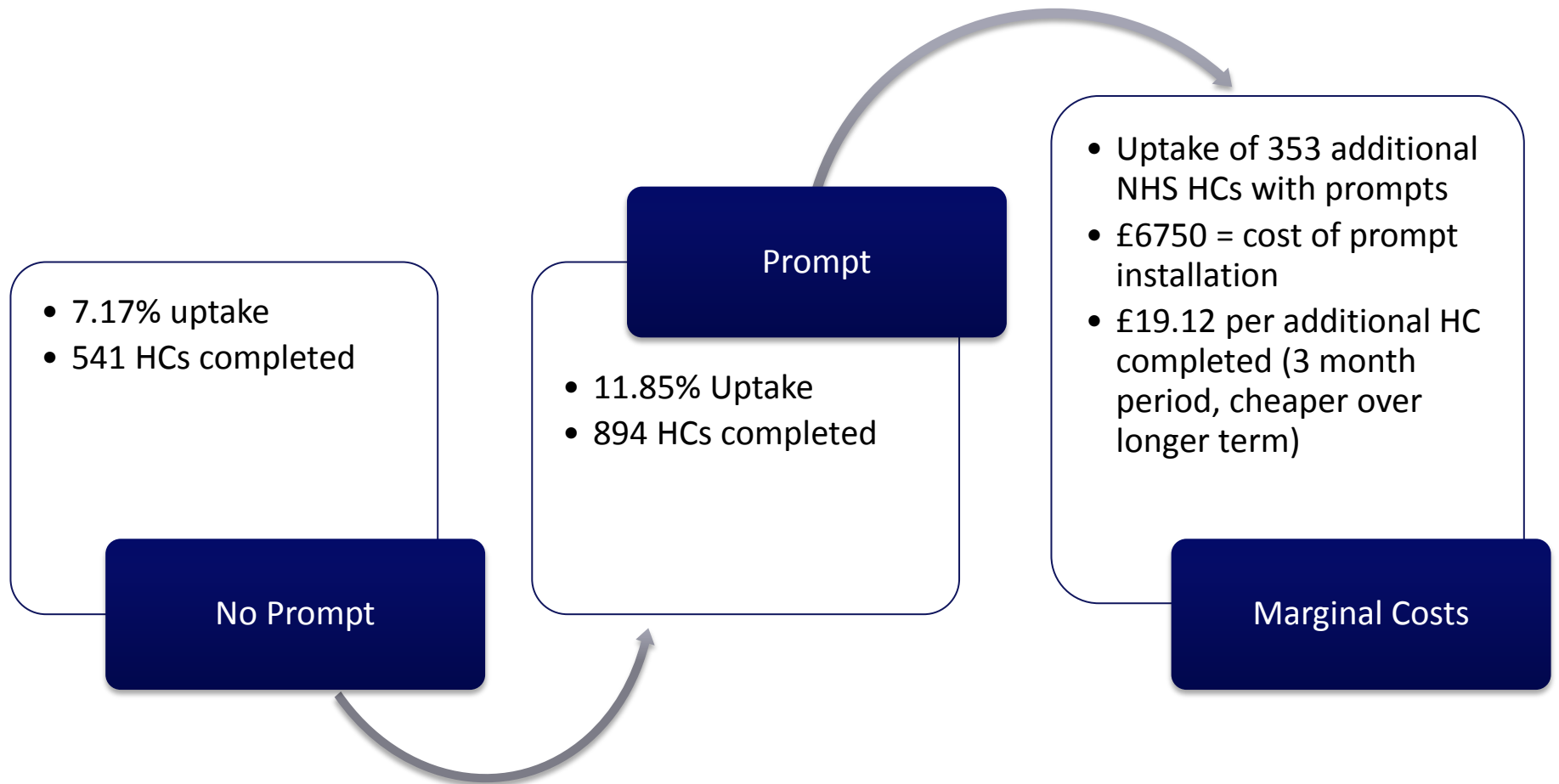
Ethnicity, $\chi^2 = 0.99^*$



Age Category, $\chi^2 = 0.55^*$



- Group adjusted Chi-2 reported; N = 7548 Control = 3780, Intervention = 3768





Conclusions & Further Considerations

Prompts to clinical staff on GP IT systems increases the uptake of NHS Health Checks

- Trial in Southwark in 16 GP practices demonstrated that the use of prompts increased the uptake of NHS Health Checks.
- Easy & scalable: approx. £5.00 per additional NHS HC completed (annual)
- Generalisability:
 - Practices opted into the prompt systems – they may be different from the other practices that chose not to install the prompts
- Potential for spillover behaviours
 - Clinical staff may be reminding patients more frequently even if they do not see the prompt (as a result of seeing previous prompts). Therefore, the effect of the intervention could be larger than reported.



Authors & Acknowledgements

- Karen Tan, Behavioural Insights Researcher, PHE
- Dr Tim Chadborn, Behavioural Insights Lead Researcher, PHE
- Joseph Sherlock, Behavioural Insights Researcher
- Alison Furey, Consultant in Public Health, Southwark Council
- Teresa Edmans, Programme Manager – NHS Health Check, Southwark Council
- Ryszard Stepaniuk, Pathway Improvement Manager – Systems, NHS Southwark Clinical Commissioning Group





Public Health
England

Thank You

Karen.Tan@phe.gov.uk